

Report from May 3, 2023, 10:17:00 AM

https://www.poolandhottubdepot.com/

Analyze

Mobile

Desktop



Discover what your real users are experiencing

This URL Origin



Core Web Vitals Assessment: Failed

Collapse view

Largest Contentful Paint (LCP)

2.1 s



Page Loads

Good (≤ 2.5 s)	82%
Needs Improvement (2.5 s - ...)	13%
Poor (> 4 s)	5%

75th Percentile - 2.1 s

Core Web Vital

First Input Delay (FID)

3 ms



Page Loads

Good (≤ 100 ms)	97%
Needs Improvement (100 m...)	2%
Poor (> 300 ms)	1%

75th Percentile - 3 ms

Core Web Vital

Cumulative Layout Shift (CLS)

0.69



Page Loads

Good (≤ 0.1)	11%
Needs Improvement (0.1 - 0...)	10%
Poor (> 0.25)	79%

75th Percentile - 0.69

Core Web Vital

OTHER NOTABLE METRICS

First Contentful Paint (FCP)

1.7 s



Page Loads

Good (≤ 1.8 s)	80%
Needs Improvement (1.8 s - ...)	14%

Interaction to Next Paint (INP)

64 ms



Page Loads

Good (≤ 200 ms)	95%
Needs Improvement (200 m...)	3%

Time to First Byte (TTFB)

0.3 s



Page Loads

Good (≤ 0.8 s)	93%
Needs Improvement (0.8 s - ...)	6%

📅 Latest 28-day collection period

📱 Various desktop devices

👤 Many samples ([Chrome UX Report](#))

🕒 Full visit durations

🌐 Various network connections

🔄 All Chrome versions

🔍 Diagnose performance issues



Performance



Accessibility



Best Practices



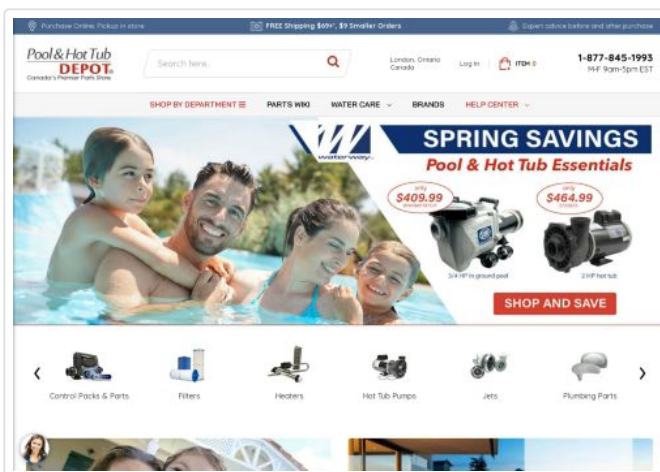
SEO



Performance

Values are estimated and may vary. The [performance score is calculated](#) directly from these metrics. See [calculator](#).

▲ 0–49 ■ 50–89 ● 90–100



METRICS

[Collapse view](#)

● First Contentful Paint

0.9 s

First Contentful Paint marks the time at which the first text or image is painted.

[Learn more about the First Contentful Paint metric.](#)

■ Largest Contentful Paint

1.5 s

Largest Contentful Paint marks the time at which the largest text or image is painted.

[Learn more about the Largest Contentful Paint metric](#)

■ Total Blocking Time

▲ Cumulative Layout Shift

Time to interactive, when task length exceeded 50ms, expressed in milliseconds. [Learn more about the Total Blocking Time metric.](#)

movement or visible elements within the viewport. [Learn more about the Cumulative Layout Shift metric.](#)

Speed Index

1.7 s

Speed Index shows how quickly the contents of a page are visibly populated. [Learn more about the Speed Index metric.](#)

Captured at May 3, 2023, 10:17 AM EDT

Emulated Desktop with Lighthouse 10.1.1

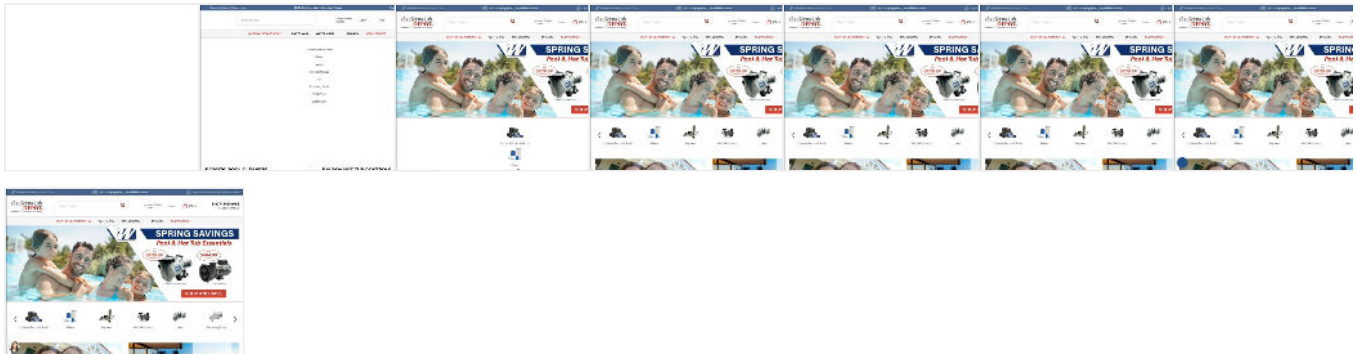
Single page load

Initial page load

Custom throttling

Using HeadlessChromium 112.0.5615.142 with lr

View Treemap



Show audits relevant to: **All** FCP LCP TBT CLS

OPPORTUNITIES

Opportunity	Estimated Savings
Reduce initial server response time	0.59s
Reduce unused JavaScript	0.19s

These suggestions can help your page load faster. They don't [directly affect](#) the Performance score.

- ▲ Reduce the impact of third-party code – **Third-party code blocked the main thread for 480 ms** ▾
- ▲ Does not use passive listeners to improve scrolling performance ▾
- ▲ Image elements do not have explicit [width](#) and [height](#) ▾
- ▲ Serve static assets with an efficient cache policy – **25 resources found** ▾
- Avoid an excessive DOM size – **1,373 elements** ▾
- Minimize main-thread work – **2.4 s** ▾
- Reduce JavaScript execution time – **1.3 s** ▾
- Avoid chaining critical requests – 17 chains found ▾
- Keep request counts low and transfer sizes small – 153 requests • 1,935 KiB ▾
- Largest Contentful Paint element – 1 element found ▾
- Avoid large layout shifts – 5 elements found ▾
- Avoid long main-thread tasks – 10 long tasks found ▾

More information about the performance of your application. These numbers don't [directly affect](#) the Performance score.

PASSED AUDITS (23)

[Show](#)



... detected so manual testing is also encouraged.

ARIA

▲ [\[aria-*\] attributes do not match their roles](#) ▼

These are opportunities to improve the usage of ARIA in your application which may enhance the experience for users of assistive technology, like a screen reader.

CONTRAST

▲ [Background and foreground colors do not have a sufficient contrast ratio.](#) ▼

These are opportunities to improve the legibility of your content.

NAMES AND LABELS

▲ [<frame> or <iframe> elements do not have a title](#) ▼

These are opportunities to improve the semantics of the controls in your application. This may enhance the experience for users of assistive technology, like a screen reader.

NAVIGATION

▲ [Heading elements are not in a sequentially-descending order](#) ▼

These are opportunities to improve keyboard navigation in your application.

ADDITIONAL ITEMS TO MANUALLY CHECK (10)

[Show](#)

These items address areas which an automated testing tool cannot cover. Learn more in our guide on [conducting an accessibility review](#).

PASSED AUDITS (19)

[Show](#)



Best Practices

GENERAL

- ▲ Uses deprecated APIs — 1 warning found ▼
- ▲ Browser errors were logged to the console ▼
- Detected JavaScript libraries ▼

TRUST AND SAFETY

- Ensure CSP is effective against XSS attacks ▼

PASSED AUDITS (11) Show

NOT APPLICABLE (1) Show

SEO

These checks ensure that your page is following basic search engine optimization advice. There are many additional factors Lighthouse does not score here that may affect your search ranking, including performance on [Core Web Vitals](#). [Learn more about Google Search Essentials](#).

ADDITIONAL ITEMS TO MANUALLY CHECK (1)

[Show](#)

Run these additional validators on your site to check additional SEO best practices.

PASSED AUDITS (12)

[Show](#)

NOT APPLICABLE (2)

[Show](#)

More on PageSpeed Insights

[What's new](#)

[Documentation](#)

[Learn about Web Performance](#)

[Ask questions on Stack Overflow](#)

[Mailing list](#)

Related Content

[Updates](#)

[Web Fundamentals](#)

[Case Studies](#)

[Podcasts](#)

Connect

[Twitter](#)

[Youtube](#)

